



OGIO® Trax Jacket. OG726

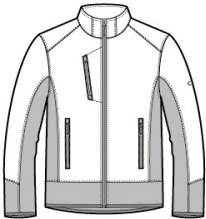


This forward-thinking jacket fuses a technical grid pattern with stretch side panels for style that moves at your speed.

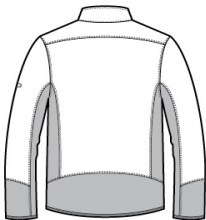
- 100% woven poly shell bonded to 100% poly knit fleece with 93/7 poly/spandex fleece side panels
- OGIO heat transfer label for tag-free comfort
- Reverse coil zippers
- Right chest pocket
- Zippered front pockets with OGIO zipper pulls
- Black reflective O on left sleeve
- Open cuffs and open drop tail hem with binding

CARE INSTRUCTIONS

Machine wash cold with like colors. Do not bleach. Tumble dry low. Remove Promptly. Cool iron if needed.

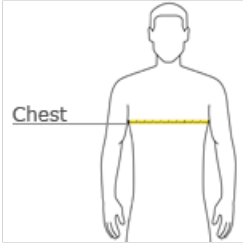


front



back

HOW TO MEASURE



CHEST WIDTH
Measure under the arm and around the fullest part of the chest with arms down, keeping tape horizontal.

SIZE CHART

	XS	S	M	L	XL	2XL	3XL	4XL
Chest	32-34	35-37	38-40	41-43	44-46	47-49	50-53	54-57

COLOR INFORMATION



Blacktop
PMS NTR BLACK C